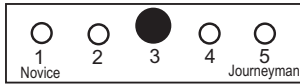


SERVICE TIPS

Updated: 10/2011

DIFFICULTY LEVEL - 3



15 to 25 Min

Before working - always follow all instructions and warnings described in the Operator's Manuals for this mower.

NOTICE:

If you are unsure of how to use these instructions please contact us by e-mail: service@ybravo.com or by phone: 1.888.ybravo.1 (1.888.927.2861)

Tools needed:

1 pcs 10mm wrench
1 pcs 13mm wrench

Alternatively (better)

1 pcs 10mm socket
1 pcs 13mm socket



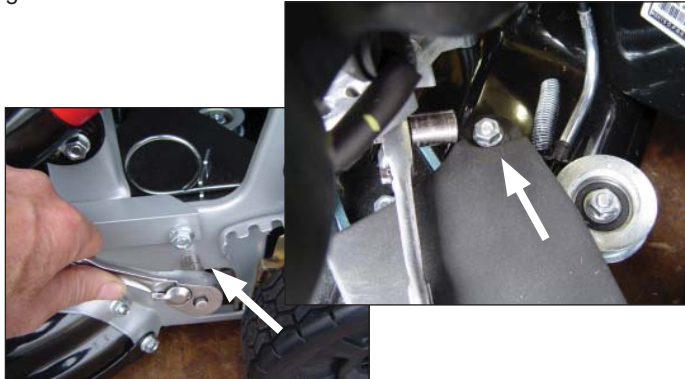
STEP 1

Always remove the ignition cable from the spark plug before performing any service work!

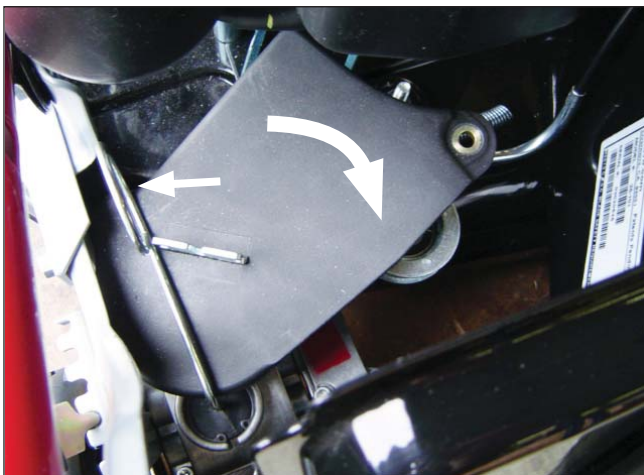


STEP 2

Remove the 13mm nut and the 10mm hex screw for the belt guard as illustrated.



Pull the shift lever towards the "LO" speed setting of the transmission. Rotate the cover clockwise for removal.

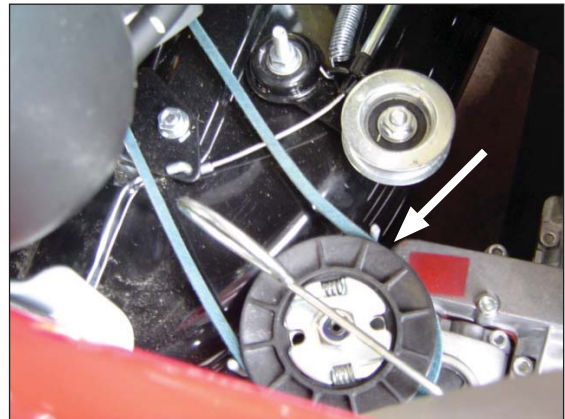


STEP 3

Slide the belt off the transmission pulley.

Note:

It is important that the belt guide hold the belt close to the pulley without pushing the belt into the groove of the pulley. If the guide is pushing the belt into the pulley the mower can become difficult to pull back.



STEP 4

Place the rear of mower on a support as illustrated.



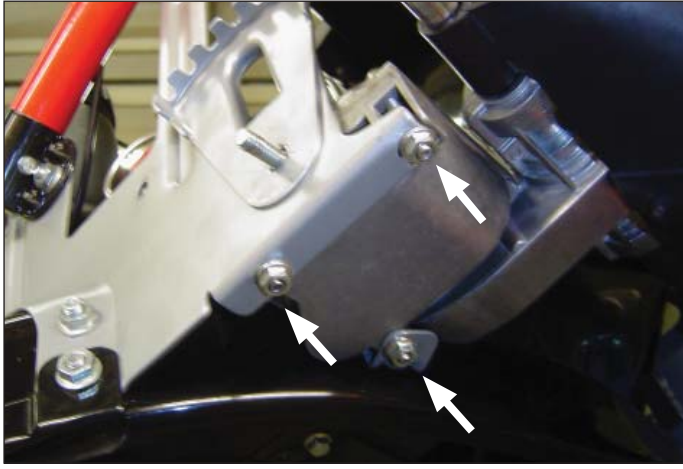
STEP 5

Remove the wheels and both wheel brackets. If necessary use the puller (201176-1) to assist the removal of the brackets from the axle.



STEP 6

Remove the three 10mm nuts located at the bottom of the transmission.



Step 7

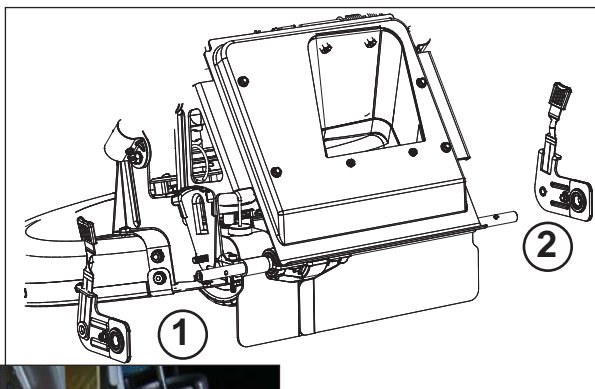
Inspect the ball bearing in each wheel bracket for damage before installation. The bearings can easily be replaced by removing the screw from the clamp. The bearing is the same size as used for the front wheels.



ASSEMBLY

Step 8

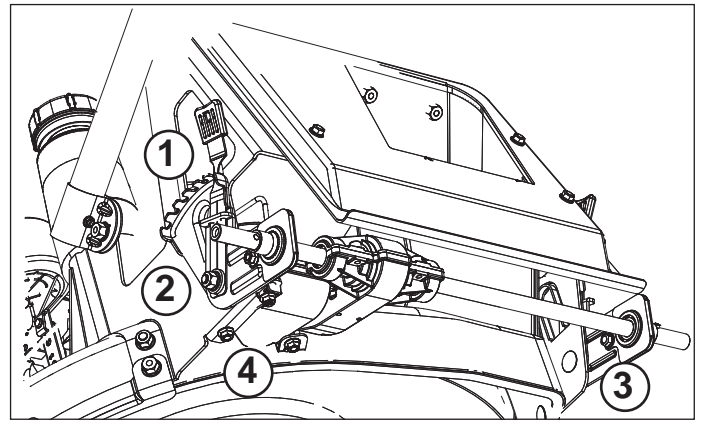
Assemble the transmission and wheel brackets on the mower. Install the left side wheel bracket first (1). DO NOT TIGHTEN any screws.



For easier installation hold the bracket and the bushing together as one unit.

Step 9

Tighten the screws in the following sequence:



1. Place the height adjustment lever at the same height on the Right and Left side
2. Tighten the wheel bracket nut on the Left side
3. Tighten the wheel bracket nut on the Right side
4. Tighten the three nuts for the transmission

STEP 10

Make sure that the belt is properly in place and the belt guide (5) is properly adjusted. During installation of the transmission it is possible for the belt to come off the engine pulley. Verify the belt guide adjustment by rotating the wheel in reverse with the transmission shifted into the "HI" speed position.

Make sure the return spring (6) is in place and that the belt tensioning arm is moving freely. Note the proper position for the transmission cable (7).

Note:

If the belt tension arm is not moving freely or the return spring is not in place (6) it can cause an intermittent problem with pulling back on the mower when it is in HI or LO speed position.

