



Ybravo

BRAVO GEN II

**5 Year Consumer
2 Year Commercial
WARRANTY**

Unmatched Cut Quality

Simple Control Panel

Ergonomic U-Handle

Cutting Heights up to 4.5"

Optimized Mowing Speeds

Enhanced Accessory Offerings

Industry Leading Warranties



OUR DESIGN PHILOSOPHY ...

Simplicity | Low Weight | Easy to Control & Handle | Fast Cutting Speed | Excellent Cut Quality | Superior Bagging
Easy to Service | Low Cost of Total Ownership | Built for Rigorous Commercial Landscapes

YBRAVO.COM • 888.YBRAVO.1 • SALES@YBRAVO.COM



NEW 2016 MOWER LINE-UP

What's New with the Gen II?

Increased blade tip speed for superior performance while bagging OR mulching

Simple control panel, allowing for easier operation

Overall cutting height, now up to 4.5"

Redesigned ergonomic U-Handle for improved maneuverability and operator comfort

Optimized mowing speed to get the job done fast or slow down for thick wet grasses

Expanded accessory offerings: side discharge chute and 21" mulch liner

What stays the same?

Professional products — with heavy-duty steel decks, premium Kawasaki engines, excellent mulching and bagging capabilities, large wheels and ergonomic design for commercial users.

Increased productivity — The Bravo 25 features the weight and handling of a 21" mower, BUT a 25" cut for a 19% increase in productivity and profits!

Increased Profits — Ybravo mowers are built for commercial use. Replaceable wear strips, heavy duty construction and superior parts ensure your mower cuts strong for a long time. PLUS, Ybravo offers the best spare part pricing in the industry.

DESCRIPTION	TORO	HONDA	YBRAVO
Throttle Cable	N/A	\$23.36	\$9.00
Drive Cable	\$26.31	\$9.12	\$12.50
Brake Cable	\$17.53	\$24.84	\$13.00
Wheel Front	\$27.40	\$36.32	\$25.00
Rear Wheel	\$32.90	\$36.88	\$25.00
High Vent Grass Bag	\$47.14	\$37.00	\$32.00
Transmission	\$209.98	\$471.48	\$135.00

*Prices are subject to change without notice.

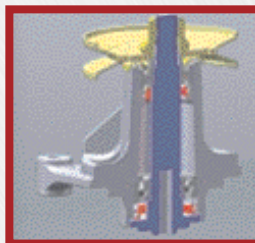
SIMPLY PROFESSIONAL FEATURES & ACCESSORIES



Strong Multi-Purpose Front Axle - The large diameter (30mm) front axle provides a rigid and strong mounting device for the front wheels, protects the front of the mower and can be used to lift the mower.



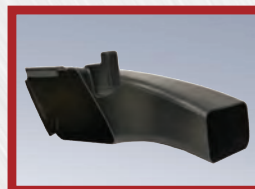
Oversized Handle Tubes - The cables are inside the tubes for superior cable protection. No more snagged cables! The 34mm aircraft quality aluminum tubes are strong while minimizing weight.



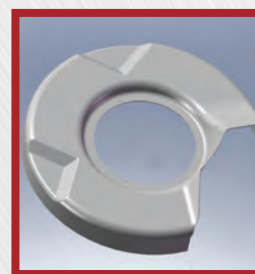
Blade Spindle Assembly - A forged spindle shaft for optimum strength. Die cast aluminium housing for better heat dissipation. Innovative lubrication design places each ball bearing in its own sealed compartment within the spindle housing ensuring permanent lubrication (available on 25" models).



Kawasaki Engines - Premium engine offerings commercial cutters desire, backed by a 3 year engine warranty



Discharge Chute - Remove the bag and use this convenient snap on discharge chute to tackle tall, thick grass. (sold sperately) PN: 201238-1



Mulch Liner - This unique deflector keeps grass from sticking to the top of the deck. Grass is directed back down through the blades for superior mulching and clipping distribution. (Sold sperately, available for 21" only) PN: 201241-1

BRAVO 25

19% more acres per hour (from 21" to 25")

@ \$40 per hour = \$7.60 per hour

180 working days per year x 5 hours per day = 900 hours

x \$7.60* = \$6,840 per year

***20% revenue increase per hour**

**INCREASED
PRODUCTIVITY & PROFIT**



The Bravo 25" adds an extra 19% in cutting productivity as compared to 21" commercial mowers. Since the weight of the Bravo 25 is similar to a typical 21" commercial mower, you gain the cutting performance of a larger unit while still enjoying the user friendliness of a light weight and nimble handling mower. Superior bagging performance, 4.5" cutting height, and premium mulching capability are all standard on this mower that is built to last!

BRAVO 21

**IDEAL FOR BAGGING
OR MULCHING!**



NEW 5 Year Consumer Warranty
2 Year Commercial Warranty

The Bravo 21 has a heavy-duty 2-speed transmission that delivers the perfect pace for the operator. The high blade tip speed and well adjusted ground speed combine to create a superior overall cut quality. With 4.5" inches of available cutting height, this mower is rapidly becoming the preferred pick for commercial cutters.

SPECIFICATIONS*	BRAVO 21 Zone Start Model 21-610	BRAVO 21 BBC Model 21-210	BRAVO 25 BBC Model 25-210
Engine	Kawasaki FJ180V Kai	Kawasaki FJ180V Kai	Kawasaki FJ180V Kai
Transmission	Heavy duty 2-speed gear drive		
Ground Speed	2.8- 3.9 mph @ 3,300 engine rpm**		
Wheel Ratchet System	Integrated within Transmission		
Transmission Drive	3L Kevlar Belt		
Cutting Width	21"		25"
Deck Material	14-gauge stamped steel		
Cutting Heights	1" - 4.5" in .5" increments		
Front Axle	30mm steel tube		
Bagger	Soft bottom, high vent grass bag standard		
Blade	Standard Blade (includes wing tips to create the Ultimate Bagging System)		Standard Blade
Blade Control	Zone Start	BBC	BBC
Consumer Warranty	5 Years Limited Warranty (5 Years Parts / 2 Years Labor)		
Commercial Warranty	2 Years Limited Warranty (2 Years Parts / 1 Year Labor)		
Engine Warranty	3 Year Kawasaki	3 Year Kawasaki	3 Year Kawasaki

*Specifications are subject to change without notice. ** Ground speeds are approximate measurements.

WHY

Ybravo

ARE YOU LOOKING FOR AN AFFORDABLE HIGH QUALITY MOWER? **THEN YOU NEED YBRAVO!**

- **Minimal investment** for high quality equipment
- Low cost of ownership (best spare parts pricing in the industry)
- Unique **25" Mower**
(All the advantages of a 21" with a 19% gain in productivity)
- **Simplistic design** preferred by commercial users
- **Premium Kawaskai engine** that commercial users demand
- Backed by **INDUSTRY LEADING WARRANTIES**

STILL NOT CONVINCED?

Google Ybravo and see what our commercial users
and dealers are saying about our mowers!



YBRAVO.COM



888.YBRAVO.1