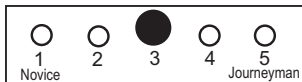


SERVICE TIPS

Updated: 01/2011

DIFFICULTY LEVEL - 3



15 to 25 Min

Before working - always follow all instructions and warnings described in the Operator's Manuals for this mower.

NOTICE:

If you are unsure of how to use these instructions please contact us by e-mail: service@ybravo.com or by phone: 1.888.ybravo.1 (1.888.927.2861)

Tools needed:

1 pcs 10mm wrench
1 pcs 13mm wrench

Alternatively (better)

1 pcs 10mm socket
1 pcs 13mm socket



STEP 1

Always remove the ignition cable from the spark plug before performing any service work!



STEP 2

Remove the 13mm nut and the 10mm hex screw for the belt guard as illustrated.



Pull the shift lever towards the "LO" speed setting of the transmission. Lift up on the shift lever at the same time as lifting the cover. The cover slides off towards the right side.



STEP 3

Slide the belt off the transmission pulley. Do not bend the belt guide.

Note:

It is important that the belt guide hold the belt close to the pulley without pushing the belt into the groove of the pulley. If the guide is pushing the belt into the pulley the mower can become difficult to pull back.



STEP 4

Place the rear of mower on a support as illustrated.



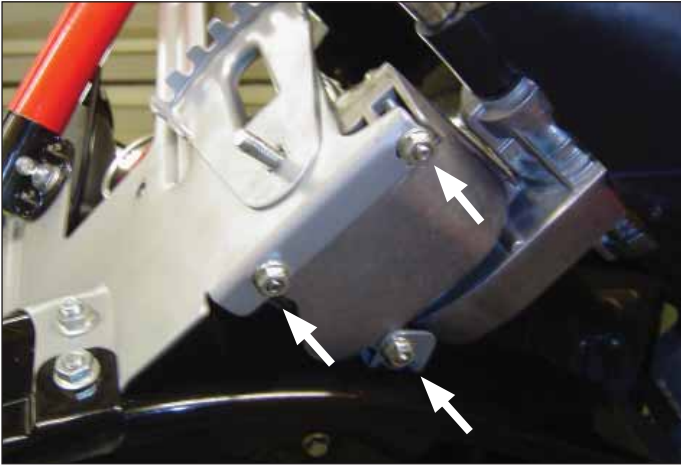
STEP 5

Remove the wheels and both wheel brackets. If necessary use the puller 201176-1 to assist the removal of the brackets from the axle.



STEP 6

Remove the three 10mm nuts located at the bottom of the transmission.



Step 7

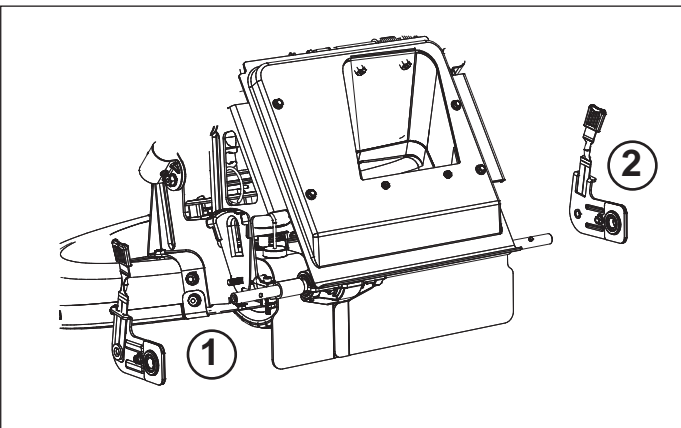
Inspect the ball bearing in each wheel bracket for damage before installation. The bearings can easily be replaced by removing the screw from the clamp. The bearing is the same size as used for the front wheels.



ASSEMBLY

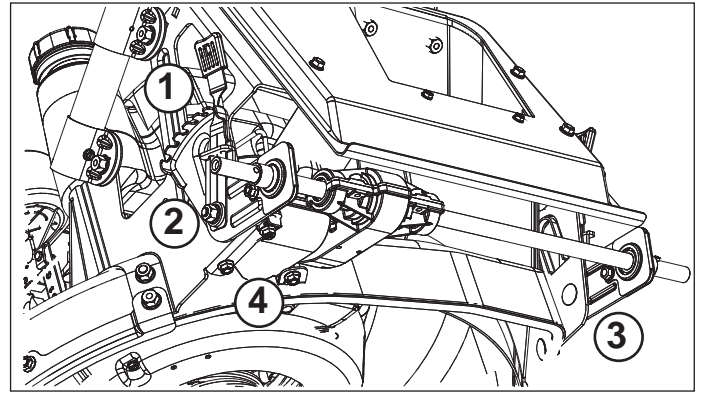
Step 8

Assemble the transmission and wheel brackets on the mower - left first (1). DO NOT TIGHTEN any screws.



Step 9

Tighten the screws in the following sequence:



1. Place the height adjustment lever at the same height on the Right and Left side
2. Tighten the wheel bracket nut on the Left side
3. Tighten the wheel bracket nut on the Right side
4. Tighten the three nuts for the transmission

STEP 10

Make sure that the belt is properly in place and the belt guide (5) is properly adjusted. During installation of the transmission it is possible for the belt to come off the engine pulley. Verify the belt guide adjustment by rotating the wheel in reverse with the transmission shifted into the "HI" speed position.

Make sure the return spring (6) for the belt tensioning arm is properly in place.

Note:

Failure of the spring will cause an intermittent problem with pulling back on the mower when it is in HI or LO speed position.

